

DAILY PROGRAMME

THE MOST FAMOUS OCEAN LINERS IN THE WORLDSM

SATURDAY, 20 AUGUST 2011

EN ROUTE TO NEW YORK



RMS QUEEN MARY 2

WESTBOUND TRANSATLANTIC CROSSING

VOYAGE NUMBER QM119

Deputy Captain: Robert Camby Chief Engineer: Brian Wattling Master: Commodore Christopher Rynd Hotel Manager: Robert Howie Entertainment Director: Paul O'Loughlin

TONIGHT'S DRESS REQUIREMENT

FORMAL DRESS

Tuxedo, dinner jacket or formal dark suit with tie for the gentlemen; evening dress or other evening attire for the ladies. Please note that the Formal Dress code applies from 6.00pm this evening. Out of respect for your fellow guests, the dress code will be enforced. The Kings Court provides an alternative for those guests who prefer a more relaxed evening attire.

FROM THE NAVIGATOR

⌚ TIME CHANGE

Please be advised that early tomorrow the clocks will be SET BACK BY ONE HOUR. Please set your watches BACK before retiring this evening, Saturday, 20 August.

NAVIGATION INFORMATION

Once we have passed over the Grand Banks we will set a Rhumb Line course to a position South of Sable Island and then Nova Scotia. Sable Island is a narrow crescent-shaped sandbar believed to have been formed from large quantities of sand and gravel deposited on the continental shelf near the end of the last ice age.

SUNRISE AND SUNSET

Sunrise: 06.27am / Sunset: 8.32pm

NAUTICAL FACT OF THE DAY

PORT AND STARBOARD

"Starboard" is the right-hand side of a vessel when looking forward. It's generally accepted to be a corruption of "steer-board", the board or oar which projected into the sea from the starboard quarter of old vessels and by which they were steered before the invention of the hanging rudder.

"Port" is the left-hand side when looking forward. The name probably owes its derivation to the fact that the old-fashioned merchant ships had a loading port on their left-hand side, and the later sailing warships also had their entry port on that side.

CUNARD INSIGHTS LECTURE ENRICHMENT PROGRAMME

THESE LECTURES WILL BE REPEATED ON TV CH. 30 BEGINNING AT 5.00PM TODAY.

At 10.00am in Illuminations, Deck 3 Forward ⚓

'The Lives and Deaths of Stars - from the very small to the very large'

Find out how stars are born from clouds of hydrogen in space. Follow them through into maturity and eventually old age. Discover how they hand down their attributes to the next generation. Find out the spectacular ways that stars finally die. We will contrast giant stars with dwarf stars and explain the advantages of having a small yellow dwarf star as our Sun and why our Sun will live for such a long time
Presented by Royal Astronomical Society speaker, Tom Boles

GLIMPSE OF A SHIP'S GALLEY



At 10.15am from the Britannia Restaurant on Deck 2 stairway C

Ever wondered how over 12,000 meals are prepared each and every day? Executive Chef Klaus Kremer opens the Britannia Galley to guests for a rare 'behind-the-scenes' look at QUEEN MARY 2's largest and busiest Kitchen. Please enter via the Britannia Restaurant on Deck 2 stairway C for a stroll through several sections of the operation - including the Dishwash, Cold Larder, Hot Galley and Pastry Shop - where Klaus and his Brigade will be on hand to answer your questions. Please note: Sensible non-slip footwear is recommended, Cameras permitted
QUEEN MARY 2 cookbook available in the Bookshop deck 8, Forward.

COOKING DEMONSTRATION

At 11.15am in Illuminations, Deck 3 Forward ⚓

Join our Chefs, Noli Salimbagat Chef de Cuisine - Queens/Princess Galley & Douglas Begg - Pastry Chef, as they create some sumptuous dishes! Presented by your Entertainment Director, Paul O'Loughlin.

NAVIGATIONAL CHART AUCTION & VIRTUAL BRIDGE TOUR

At 3.30pm in Illuminations, Deck 3 Forward ⚓

Entertainment Director, Paul O'Loughlin will auction the original navigational chart for this voyage. Proceeds go to the The Princes' Trust. Afterward, Safety Officer, Nigel Smyth and 3rd Officer, Andy Atkinson will present a Powerpoint Presentation as a Virtual Bridge Tour.



THE ROYAL ACADEMY OF DRAMATIC ART PRESENTS:

THE CANTERBURY TALES

At 2.15pm in the Royal Court Theatre, Decks 2 & 3 ⚓

Join our six Pilgrims at the first staging post in their journey to Canterbury; as they go along they regale each other with music, songs and stories - tales that are exciting, bawdy, silly, romantic, adventurous and magical by turns; to while away the tedium of their journey, they are having a storytelling competition and the audience will be the final judges. This performance is laced with Chaucer's original bawdy adult humour.



SHOWTIME TONIGHT IN THE ROYAL COURT THEATRE!

At 8.45pm & 10.45pm in the Royal Court Theatre, Deck 2 & 3 ⚓

THE SPECTACULAR PRODUCTION SHOW!

Apassionata

FEATURING THE ROYAL CUNARD SINGERS & DANCERS

With The Royal Court Theatre Orchestra directed by Musical Director, Joey Mix.

Presented by your Entertainment Director, Paul O'Loughlin

Environmental Compliance HOTLINE 1 (888) 290-5105 (North America) | www.carnivalcompliance.com

SHIPBOARD INFORMATION

FILM CREW ON BOARD

There is a film crew accompanying us on this trip who will document the voyage on the Queen Mary 2. The movie will be used exclusively for the shipping company Cunard. We would like to inform you that it is possible that you will be filmed. Should you not wish to appear in this film, please give us or the film team notice beforehand. We would appreciate your assistance with this film. So, if you would like to take part in the movie and even play a little role, please do not hesitate to approach our on-board staff or the film crew. Kindly excuse any possible inconvenience. We wish you a pleasant stay with us on board.

JOGGING ON DECK 7

Please be advised that jogging and power walking on deck is not permitted before 8.00am or after 8.00pm as this causes disturbance to guests sleeping below. Thank you for your co-operation.

THE PRINCE'S TRUST

Cunard Line is proud to be in partnership with youth charity The Prince's Trust, helping to raise vital funds to change the lives of disadvantaged young people in the UK. The Prince's Trust gives young people practical and financial support, developing key workplace skills such as confidence and motivation. It works with 14- to 30-year-olds who have struggled at school, have been in care, are long-term unemployed or have been in trouble with the law. All proceeds from today's Nautical Chart Auction will go to The Prince's Trust Charity.

SMOKING AREAS

Please be advised that all public spaces, alleyways and inside or outside elevators are non smoking except in Churchill's Cigar Lounge. Outside, on the open decks, smoking is only permitted on the starboard side of the aft end of the ship on deck 8, under the canopy and on deck 7 Aft under the clock. Pipe and Cigar smoking is only permitted in Churchill's Cigar Lounge and on the permitted open deck spaces.

INTERNET CENTRE – FREQUENT USER SPECIAL

Today Only, purchase your 2nd Internet Time Plan today and receive additional FREE minutes. Please see the Internet Manager during the desk hours to claim your bonus:

Time Plan 1 - 40 Free minutes

Time Plan 2 - 30 Free minutes

Time Plan 3 - 20 Free minutes

Open 24 Hours Deck 2, Room 1, in the ConneXions Centre.

Wireless Access is available on board.

FOREIGN EXCHANGE INFORMATION

Please be advised that Foreign Currency Exchange is available at the Purser's Desk of Deck 2, Grand Lobby.

	Buy*	Sell*
EUR	0.76	0.64
GBP	0.67	0.57
AUD	1.06	0.89
CAD	1.09	0.91

* Rates are approximate. QUEEN MARY 2 trades in USD.

COMMODORE'S MEMORABILIA SIGNING

At 3.00pm in the Library, Deck 8

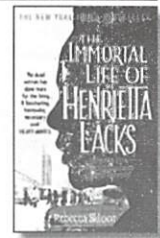
Don't miss this opportunity today to have your Cunard and QUEEN MARY 2 books and prints made even more special. Commodore Christopher Rynd will be available to sign memorabilia from our Bookshop. We kindly ask that you do not bring postcards, menus and other trivial items.

QUEEN MARY 2 BOOK CLUB

At 2.00pm in the Boardroom, Deck 9

Like to have a good read and meeting fellow guests for a lively discussion? If so the bookclub is for you. We will be discussing *The Immortal Life of Henrietta Lacks* by Rebecca Skloot. She died in 1952, what happened next changed the world. No dead woman has ever done more for the living. A fascinating, harrowing, necessary book.

Books can be purchased from the Bookshop on Deck 8.



THE WORLD OF WHISKEY



At 3.00pm in the Commodore Club, Deck 9

Don't miss your chance to explore the exciting World of Whiskey. Today at 3.00pm in the Commodore Club the beverage team presents five international whiskeys including favourites from the United States, classics from Scotland and a few surprises along the way. A fantastic introduction for beginners and fun for the connoisseur. A nominal fee of \$35.00 +15% Service charge applies.

MAYFAIR SHOPS EXCLUSIVE – CHOPARD "THE STORY"

At 10.15am in the Chart Room, Deck 3

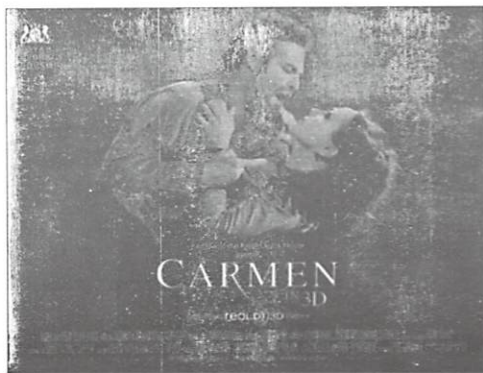
Be the first to see this brand new informative seminar from our Chopard Expert Rosana Davies. Find out about the brand's origins and how their watches and fine jewellery now adorns worldwide celebrities.

3D CINEMA EVENT: CARMEN - A NIGHT AT THE OPERA

From 8.30pm to 11.30pm (with interval) in Illuminations, Deck 3

Passion, jealousy and betrayal take centre stage at London's Royal Opera House in a spectacular production of the world's most popular opera. Georges Bizet's *Carmen* is packed with some of the best-loved and memorable music in all of opera. It has everything from intimate solos to rousing choruses - the seductive 'Habanera' and 'The Toreador's Song' are just two of its familiar melodies. In this characteristically vivid and vibrant stage production by Francesca Zambello, beautifully filmed in 3D by Julian Napier, Seville is brought to life with ranks of soldiers, crowds of peasants, gypsies and bullfighters. This spectacular RealD and Royal Opera House production features a supremely talented cast, gripping drama and Bizet's energetic and passionate score. It is truly a musical event to remember. With English subtitles throughout, it is the perfect event for life-long opera fans and first-timers alike!

This production is a full operatic experience has not been edited or abridged. The showing will commence at 8.30pm with a 20-minute interval after approximately 90 minutes, the second part is approximately 60 minutes. Guests may need to adjust dinner schedules in order to take part. Programmes and 3D glasses will be available at the doors.



For the full 'night at the opera' evening on board QUEEN MARY 2, why not book a table at one of our alternative dining venues? Todd English offers signature interpretations of Mediterranean fare, and tonight our speciality restaurants offer a la carte dining in The Carvery, offering traditional British cuisine, and Lotus, with an Asian-inspired tasting menu. The Chef's Galley will perform a cooking demonstration of gourmet Italian dishes. A truly tantalising selection to make your evening even more special. Booking information for alternative dining may be found on the back of your Daily Programme, or ask your Maitre d' for details.

TODAY'S ACTIVITIES

SATURDAY, 20 AUGUST 2011

MORNING ACTIVITIES

- 6.00am "Wake up with Paul" (repeated continuously until noon). TV Ch. 29
TV Show with your Entertainment Director, Paul O'Loughlin.
- 8.00am Canyon Ranch Fitness . . . Knightsbridge Room, Deck 1, Stairway C
Yoga - Basic moves to improve your wellbeing Fitness pass required.
- 8.30am Catholic Mass With Father Lawson Illuminations, Deck 3
- 9.00am Crossword Puzzle & Brainteaser Available Library, Deck 8
Canyon Ranch Fitness . . . Knightsbridge Room, Deck 1, Stairway C
Stretch It Out - Full Body Stretch. Previous sign up required.
Next Steps Workshop: ♪ ConneXions Room 6
Introduction to Apple Computers. Seating is limited
Golf Simulator Demo & Booking Session Fairways, Deck 12
With your sports directors, Shannon and David.
- 9.15am Beginners Bridge Class Atlantic Room, Deck 11
With instructor, Jerry Drennan.
- 10.00am Watercolour Art Class Chelsea Room, Deck 1, Stairway B
With instructor, Patricia Coulter; \$35 one-time fee for supplies. 25 guest max.
Canyon Ranch Fitness . . . Knightsbridge Room, Deck 1, Stairway C
Indoor Spinning - High intensity bike workout - Fitness Pass required.
Cunard Insights Lecture ♪ Illuminations, Deck 3
The Lives and Deaths of Stars - from the very small to the very large
Presented by Royal Astronomical Society speaker, Tom Boles.
Mayfair Shops Exclusive - Chopard "The Story" Chart Room, Deck 3
- 10.15am Glimpse of a Ship's Galley . From the Britannia Restaurant, Deck 2
- 10.30am Intermediate Bridge Class Atlantic Room, Deck 11
With instructor, Jerry Drennan.
Next Steps Workshop: ♪ ConneXions Room 6
Apple's iDVD - professional-style DVD builder (\$30 fee)
Table Tennis Tournament Pavilion Pool Area, Deck 12
Musical Trivia Golden Lion Pub, Deck 2
With the Entertainment Staff.
- 10.45am Solo Travellers Get-Together Chef's Galley, Deck 7 Starboard
- 11.00am Canyon Ranch Lecture ConneXions Room 4 & 5
The ANSR: To Your Anti-Aging and Acne Concerns
With Tamara Meyer, Skin Care Therapist.
Canyon Ranch Fitness . . . Knightsbridge Room, Deck 1, Stairway C
Pilates - Basic mat moves to strengthen your core. Fitness pass required.
- 11.15am Cooking Demonstration ♪ Illuminations, Deck 3
Join our Chefs, Noli Salimbagat Chef de Cuisine - Queens/Princess Galley
& Douglas Begg - Pastry Chef, as they create some sumptuous dishes!
Presented by your Entertainment Director, Paul O'Loughlin
Line Dancing Queens Room, Deck 3
With your Social Hostess, Marianne
- 11.30am Morning Trivia Golden Lion Pub, Deck 2
With the Entertainment Staff.
Deck Quoits Port/Starboard Side, Deck 13

AFTERNOON ACTIVITIES

- Noon Eight bells to mark the exact time of midday . Grand Lobby, Deck 3
Report from the Bridge Public Address
Bingo Ticket Sale Outside the Queens Room (port side) Deck 3
Until 2.00pm.
- 12.15pm Lunchtime Melodies Golden Lion Pub, Deck 2
With pianist Simon Golfe
- 12.15pm Lunchtime Melodies Chart Room, Deck 3
With harpist Rebecca Mills
- 12.30pm Ballroom Dance Class - Tango ♪ Queens Room, Deck 3
With our on-board Dance Couple, Anthony and Kristina

- 12.30pm Poolside Music Terrace Pool, Deck 8 Aft
With International Band, 'Vibz'. (Inclement weather venue: Pavilion Bar, Deck 12)
- 1.00pm Planetarium Film: Cosmic Collisions ♪ Illuminations, Deck 3
Tickets available from ConneXions, Deck 2 Fwd, from 9.00am.
- 1.30pm Shuffleboard Tournament Port/Starboard Side, Deck 13
Planetarium Film: Cosmic Collisions ♪ Illuminations, Deck 3
Tickets available from ConneXions, Deck 2 Fwd, from 9.00am.
- 2.00pm Watercolour Art Class Chelsea Room, Deck 1, Stairway B
With instructor, Patricia Coulter; \$35 one-time fee for supplies. 25 guest max.
Duplicate Bridge Session Atlantic Room, Deck 11
Canyon Ranch Fitness . . . Knightsbridge Room, Deck 1, Stairway C
Buff Booty - Bums and thighs workout. Previous sign up required
Canyon Ranch Lecture Winter Garden, Deck 7
'Don't Panic! Acupuncture Can Calm Your Mind and Heal Your Heart
With Philip Hoxby-Thompson, Acupuncturist
Snowball Jackpot Bingo ♪ Queens Room, Deck 3
Planetarium Film: Cosmic Collisions ♪ Illuminations, Deck 3
Tickets available from ConneXions, Deck 2 Fwd, from 9.00am.
Book Club Boardroom, Deck 9
Discussing "The Immortal Life of Henrietta Lacks" by Rebecca Skloot
- 2.15pm Royal Academy of Dramatic Art Matinee Royal Court Theatre, Decks 2 & 3
Presenting The Canterbury Tales
- 2.30pm Needlework & Knitting Champagne Bar, Deck 3
Join Social Hostess, Marianne, for an informal get-together with your own
projects. Please note: this is not a class.
iStudy: First Steps Workshop ♪ ConneXions Room 6
Manage Family History with Family Tree Maker (\$30 fee)
Silly Bowling Pavilion Pool Area, Deck 12
- 3.00pm Darts Competition Golden Lion Pub, Deck 2
With the Entertainment Staff.
Canyon Ranch Fitness . . . Knightsbridge Room, Deck 1, Stairway C
Total Tubes - Resistance bands to increase strength. Fitness Pass required
Whiskey Lovers Get Together Commodore Club, Deck 9
A nominal charge of \$35.00 plus 15% service per person will apply.
Commodore's Memorabilia Signing Library, Deck 8
We kindly ask that you do not bring postcards, menus and other trivial items.
QUEEN MARY Reunion Board Room, Deck 9
An informal gathering for guests who worked or travelled on the original
Cunard Queens with your Social Hostess, Marianne
- 3.30pm Chart Auction and Virtual Bridge Tour ♪ Illuminations, Deck 3
Proceeds go to the The Princes Trust. Afterward, Safety Officer, Nigel Smyth
and Third Officer Andrew Atkinson will present a Virtual Bridge Tour.
Afternoon Tea Dance ♪ Queens Room, Deck 3
Featuring the Queens Room Orchestra.
Complimentary Golf Putting Competition . . The Fairways, Deck 12
Places are limited.
- 4.00pm Friends of Bill W. Boardroom, Deck 9
Canyon Ranch Fitness . . . Knightsbridge Room, Deck 1, Stairway C
Cardio Grove - Medium paced aerobic workout .Fitness Pass required.
- 4.30pm Pub Team Trivia Golden Lion Pub, Deck 2
With the Entertainment Staff.
- 4.45pm iStudy: Seminar - Starting with Facebook . . ♪ ConneXions Room 6
- 5.00pm "Live @ 5.00" (Until 7.00pm) TV Ch. 29
The world's premier radio show at sea! LIVE with DJ Darren. Call 23015 for requests
Friends of Dorothy GLBT . . . Commodore Club, Port Side, Deck 9
Live Planetarium Presentation ♪ Illuminations, Deck 3
"Stargazing Live" Hosted by Royal Astronomical Society Speaker, Tom Boles
Tickets are available from ConneXions, Deck 2 Fwd, from 9.00am on a first-
come first-served basis.

TONIGHT'S ENTERTAINMENT

TONIGHT'S DRESS CODE: FORMAL. LADIES: EVENING DRESS OR OTHER FORMAL ATTIRE. GENTLEMEN: TUXEDO, BLACK TIE OR DARK SUIT.

GOLDEN LION PUB

Deck 2 midships

From 5.15pm to 6.00pm

SIMON GALFE

performs your favourites

7.30pm to 8.30pm and 9.30pm to 10.00pm

DEREK CONLON

entertains at the piano

At 10.00pm

NAME THAT TUNE

With the Entertainment Staff!

and at 10.30pm

KARAOKE

CHART ROOM

Deck 3 midships

From 5.15pm to 6.00pm

and 6.30pm to 7.15pm

enjoy the soothing sounds of harpist

REBECCA MILLS

From 9.30pm to 12.30am

JAZZ CLUB

groove, move or soothe to the sounds of

THE MARK HODGSON TRIO

including JAZZ POETRY

at 7.45pm with the

ROYAL ACADEMY OF

DRAMATIC ART



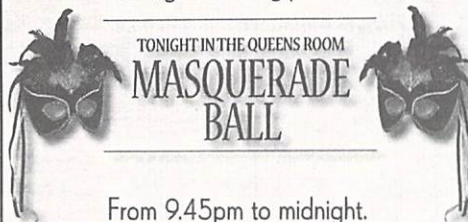
QUEENS ROOM

Deck 3 Aft

From 9.00pm to 9.45pm and
midnight to 12.30am

STRICT TEMPO MUSIC

Pre-recorded music for your
listening or dancing pleasure.



TONIGHT IN THE QUEENS ROOM

MASQUERADE BALL

From 9.45pm to midnight.

MASQUERADE BALL

Hosted by your social hostess,
MARIANNE CORLETT



Dance to the
THE QUEENS ROOM
ORCHESTRA

under the musical direction of

TERRY QUINN

featuring vocalist

JOHN LABELLE

At approximately 10.45pm enjoy a special floor show
by our internationally acclaimed dance couple:

ANTHONY AND KRISTINA

WINTER GARDEN

Deck 7 forward

From 7.30pm to 8.30pm

enjoy the cocktail hour with pianist

SIMON GALFE

ILLUMINATIONS

Deck 3 forward

At 5.00pm and 6.00pm

LIVE PLANETARIUM PRESENTATION

Hosted by Royal Astronomical Society Speaker,
Tom Boles. Tickets available from ConneXions, Deck
2 Fwd, from 9.00am until allocation exhausted

At 8.30pm

A NIGHT AT THE OPERA: CARMEN IN 3D



Programmes and 3D glasses
will be available at the doors

COMMODORE CLUB

Deck 9 forward

From 7.30pm to 8.30pm and 10.00pm to midnight
enjoy a cocktail with pianist

CAMPBELL SIMPSON

G32

Deck 3 aft

From 9.30pm to 10.30pm & 11.30pm to 12.30am

INTERNATIONAL BAND 'VIBZ'

From 10.30pm to late party the night away with

DJ DARREN!

ABSOLUTE ABBA NIGHT

From 11.00pm to midnight

Guests under the age of 18 are not permitted in G32.

ROYAL COURT THEATRE SHOWTIME

Decks 2 & 3

AT 8.45PM & 10.45PM

THE SPECTACULAR PRODUCTION SHOW!

Apassionata

A DANCE EXTRAVAGANZA OF EXCITING STYLES OF DANCE FROM AROUND THE WORLD!
FROM GLENN MILLER'S SWING TO THE TANTALISING ARGENTINIAN TANGO THIS
SHOW FEATURES SOME OF THE MOST INCREDIBLE DANCES EVER SEEN AT SEA!

With The Royal Court Theatre Orchestra directed by Musical Director, Joey Mix & Presented by your Entertainment Director, Paul O'Loughlin

Please do not reserve seats prior to Show time. Audio, video recording and flash photography is prohibited. Please also note that theatre haze and strobe lighting may be used. Once capacity of the Royal Court Theatre has been reached the doors will be shut as a requirement of health and safety



TREAT YOURSELF TO...

CANYON RANCH SPA

Decks 7 and 8 forward

CANYON RANCH MASSAGE

80 minutes for the same price as 50!
\$138 at 8:00am, 9:00am and
6:30pm. Usually \$200.

CANYON STONES MASSAGE

80 minutes \$160, usually \$220

ORGANIC SEA SALT SCRUB

50 minutes \$99, usually \$149

DEEP CLEANSING FACIAL

50 minutes \$99, usually \$149

RADIANCE PEEL PEDICURE

50 minutes \$99, usually \$135

TOUR & TRAVEL OFFICE

Deck 2 Grand Lobby

SELF HELP EXPRESS CHECK-OUT IN NEW YORK

Sign up for express disembarkation at the Tour
Office or at the Purser's Office. You must be
able to carry all of your own luggage.

EMPIRE CASINO

Deck 2 Grand Lobby

At 2.00pm

SNOWBALL JACKPOT BINGO IN THE QUEENS ROOM

Bingo tickets are on sale from noon to 2.00pm
outside the Queens Room (Deck 3, Aft)
Have fun and Good Luck!

9.00pm to 11.00pm

FUN PAIRS BLACKJACK TOURNAMENT

Qualifying rounds. Play seven hands of Blackjack
and you can be our next Blackjack champion!
If you play twice, third try is for free!

Put it all on the line with the thrill &
excitement of \$\$\$No limit Blackjack\$\$\$
Come along & give it a shot! \$20 to Enter
If you play twice -third try is for free!
You can be our next Blackjack Champion!

11:30pm

FINAL ROUND

Good luck!

CLARENDON FINE ART

The Gallery, Deck 3

INTRODUCING: FABIAN PEREZ

It has been a landmark year for Fabian Perez.
In addition to a sell out world tour, he has been
named as one of the official artists for the 2012
Olympics, and most recently to the 10th Annual
Latin GRAMMY Awards in Las Vegas, the world's
premier music event. Fabians Powerful & virtuosic
oil paintings have won him international acclaim.

VOYAGE SALES SPECIALISTS

Deck 2 B stairway

QUEEN ELIZABETH 2013 EXOTIC DISCOVERY ACROSS TWO OCEANS

Join QUEEN ELIZABETH as she embarks
on a series of sparkling voyages to and from
New Zealand's breathtaking rugged beauty.

Southampton – Southampton
(91 nights)

Los Angeles – Los Angeles
(36 nights)

Fort Lauderdale – Fort Lauderdale
(66 nights)

For more details or appointments,
please contact Eli & Yoyo
at extension 22347 & 22339

FLOWER SHOP

Flowers are the best gift, they bring joy
to a heart and laughter to a soul!

SAY IT WITH FLOWERS!

To order, please contact the Florist
on ext. 20657 from 7.30am to
Noon & 3.00pm to 8.00pm.

BARTENDERS' RECOMMENDATIONS

Available at all bars and restaurants

WILD HIBISCUS ROYALE

First served at the Dorchester Hotel in London:
Delamotte Brut Champagne combined
with Hibiscus Syrup, Mint and Rose water
all garnished with a Hibiscus Flower

SPICED MULE

Spice up your day with Lamb's Spiced Rum,
muddled lime, Angostura bitters and Ginger Beer

BOOKSHOP & LIBRARY

Deck 8 forward

SPECIAL MEMORIES OF YOUR VOYAGE

You have the opportunity today to have your
Cunard and Queen Mary 2 books and prints made
even more special. Our Commodore, Christopher
Rynd, will be available in the Library at 3.00pm
to sign memorabilia from our Bookshop. Choose
from beautifully illustrated Queen Mary 2 books,
posters, prints and Transatlantic charts. Please
note, as the Commodore's time is precious and to
allow as many people as possible to have their
memorabilia signed, a maximum of two items per
person may be brought and that postcards, menus
and other trivial items are excluded from the signing.

MAYFAIR SHOPS

Deck 3 Grand Lobby

SUMMER SALE 2011

Today is the big launch of our BRAND NEW
summer sale. There are some big offers and some big
savings to be had. 30% off Guess bags, 30% off
toys, 50% off costume jewellery. There are also some
great discounts to be had in our clothing range with
50% off Joseph Ribkoff, Oskia and Fresh Produce.
Do not miss our big summer sale launch today. This
promotion is for one day only at the Mayfair Shops.

BUY ONE, GET ONE FREE

Your only chance to buy 1 item of QM2
branded merchandise and get a second
absolutely FREE – Table promotion only

H.STERN

The Drops Collection, nature recreated in drops
of diamonds, a delicate and feminine design
that is distinguished by its natural form.

IMAGES PHOTO GALLERY

Deck 3L Portside, Britannia

LAST CHANCE FOR FORMAL PORTRAITS.

Studios will be open this evening. Let us capture
the glamour and sophistication of tonight. Studios
will be on Deck's 2 & 3 from - 5.30pm - 6.30pm,
7.30pm - 9.00pm and 10.00pm - 11.00pm.

Turn your favourite portrait into a work
of art. Enlargements of up to 20x30 in
canvas or paper are available through
the Photo Gallery, Deck 3L Aft.

OPENING & SERVICE HOURS

PLEASE DO NOT HESITATE TO CONTACT YOUR MAITRE D' WITH ANY REQUESTS OR ENQUIRIES.

TONIGHT'S DRESS CODE: FORMAL. LADIES: EVENING DRESS OR OTHER FORMAL ATTIRE. GENTLEMEN: TUXEDO, BLACK TIE OR DARK SUIT.
Public Health Notice: Public Health Services have determined that eating uncooked or partially cooked meat, poultry, fish, seafood or eggs may present a health risk to the consumer.

RESTAURANT HOURS

THE GRILLS AND BRITANNIA CLUB

(D Stairway)

Senior Maitre d'Hôtel - Beniamino Acler

Breakfast: 8.00am to 9.30am

Lunch: 12.30pm to 2.00pm

Dinner: 6.30pm to 9.00pm

BRITANNIA RESTAURANT

(Decks 2 & 3, C Stairway)

Maitre d'Hôtel - Patu Kerei

Breakfast: 8.00am to 9.30am

Lunch: 12.30pm to 2.00pm

Main dinner: 6.00pm, last order 6.30pm

Late dinner: 8.30pm, last order 9.00pm

AFTERNOON TEA

Queens Room: 3.30pm to 4.30pm

Queens Grill Lounge: 3.30pm to 4.30pm

(Grill guests only please)

WINE ENQUIRIES

For any wine enquiries, please contact

Chief Sommelier Kelley Michael Schaefer on ext 22062.

KING'S COURT

(Deck 7, C & D Stairway)

BUFFET BREAKFAST

Continental: 4.00am to 6.30am

Full Breakfast: 6.30am to 11.30am

BUFFET LUNCH/ AFTERNOON SNACK

11.30am to 5.30pm

BUFFET DINNER:

THE CARVERY

5.30pm to 11.00pm

LATE NIGHT SNACK

11.00pm to 4.00am

TODD ENGLISH

(Deck 8, D Stairway)

Lunch: Noon to 2.00pm. A \$20.00 cover charge applies.

Dinner: 6.00pm to 9.30pm. A \$35.00 cover charge applies.

For reservations please dial 28026

between 10.00am and 4.00pm.

TONIGHT'S ALTERNATIVE DINING

KING'S COURT A LA CARTE

Dine from 7.00pm - 9.00pm in the below locations where our waiters are happy to explain our A la carte menus for these speciality restaurants.

A \$10.00 cover charge applies.

For reservations please dial 25056.

CHEF'S GALLEY

Our on board show demonstration galley is where our chefs this evening will show, explain and prepare popular French dishes in front of your eyes.

Reservations will close at noon today to enable preparation.

LOTUS

An Asian inspired tasting menu full of flavours from the east.

LA PIAZZA

Fine Italian a la carte dining, our chefs prepare a fantastic Mediterranean feast.

The dress code in the a la carte venues does not require a jacket for gentlemen.

BAR HOURS

CHART ROOM

(Deck 3, C Stairway)

10.00am until late

COMMODORE CLUB

(Deck 9, A Stairway)

10.00am until late

EMPIRE CASINO BAR

(Deck 2, C Stairway)

As per casino until close

G32

(Deck 3L, D Stairway)

9.30pm until the wee small hours

Guests under the age of 18 are not permitted in G32.

GOLDEN LION PUB

(Deck 2, C Stairway)

10.00am until late

Pub Lunch: Noon to 2.30pm

PAVILION POOL BAR

(Deck 12, B Stairway)

9.00am to 7.00pm

QUEEN'S GRILL LOUNGE

(Deck 7, D Stairway)

11.00am until 2.00pm

and 6.00pm until close

(Grill guests only please)

SIR SAMUEL'S

(Deck 3, C Stairway)

7.00am to midnight

Light snacks served throughout the day until 5.00pm

TERRACE POOL BAR

(Deck 8, D Stairway)

10.00am to 10.00pm

(Weather permitting)

VEUVE CLICQUOT CHAMPAGNE BAR

(Deck 3, B Stairway)

11.00am to midnight

WINTER GARDEN

(Deck 7, B Stairway)

11.00am until 9.00pm

FACILITY HOURS

VOYAGE SALES & CUNARD WORLD CLUB

(Deck 2, B stairway)

10.00am to noon and 3.00pm to 5.00pm

CANYON RANCH SPA CLUB

(Deck 7, A stairway)

8.00am to 8.00pm

CANYON RANCH GYMNASIUM

(Deck 7, A stairway)

6.00am to 8.00pm

CANYON RANCH SALON

(Deck 8, A stairway)

9.00am to 8.00pm

MEDICAL CENTRE

(Deck 1 Portside, B stairway)

9.00am to 11.00am and 4.30pm to 6.30pm

For medical emergencies only please dial 911/999.

CLARENDON FINE ART

(Deck 3L Starboard, C stairway)

Gallery: Open 24 hours

THE ZONE & THE PLAY ZONE

(Deck 6 Portside, Aft)

9.00am to noon, 2.00pm to 5.00pm

and 8.00pm to midnight

IMAGES PHOTO GALLERY

(Deck 3L Portside, D stairway)

9.00am to 10.00pm

IMAGES PHOTO SHOP

(Deck 3, C stairway)

9.00am to 10.00pm

MAYFAIR SHOPS

(Deck 3, Grand Lobby)

9.00am to 9.00pm

BOOKSHOP & LIBRARY

(Deck 8, A stairway)

9.00am to 6.00pm

EMPIRE CASINO

(Deck 2, Grand Lobby)

24 hour Slots / Cashier: 10.00am / Tables: 11.00am

TOUR & TRAVEL OFFICE

(Deck 2, Grand Lobby)

9.00am to noon and 3.00pm to 5.00pm

INTERNET CENTRE

(Deck 2, Between A & B stairway)

Open 24 hours

INTERNET MANAGER'S HOURS

(ConneXions Room 1, Deck 2)

9.00am to noon, 2.00pm to 5.00pm

& 8.00pm to 10.00pm