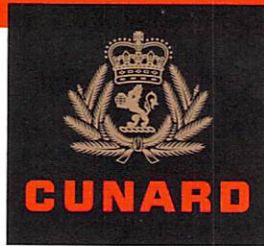


DAILY PROGRAMME

THE MOST FAMOUS OCEAN LINERS IN THE WORLDSM

THURSDAY, 18 AUGUST 2011

EN ROUTE TO NEW YORK



RMS QUEEN MARY 2

WESTBOUND TRANSATLANTIC CROSSING

VOYAGE NUMBER QM 119

Deputy Captain: Robert Camby Chief Engineer: Brian Wattling Master: Commodore Christopher Rynd Hotel Manager: Robert Howie Entertainment Director: Paul O'Loughlin

TONIGHT'S DRESS REQUIREMENT

SEMI-FORMAL DRESS

Jacket and tie for gentlemen, cocktail dress or trouser suit for ladies. No jeans. Please note the dress code applies from 6.00pm this evening. Out of respect for your fellow guests, the dress code will be enforced. The Kings Court provides an alternative for those guests who prefer a more relaxed evening attire.

FROM THE NAVIGATOR

⌚ TIME CHANGE

Please be reminded that early this morning the ship's time was SET BACK ONE HOUR. There is no further time change tomorrow.

NAVIGATION INFORMATION

During the early hours of this morning, QUEEN MARY 2 continued on her Great Circle track towards the Grand Banks of Newfoundland. Our track this evening will take us over some of the deepest sections of the Atlantic itself with soundings in this area of more than 4500 meters or 2.5 miles. QUEEN MARY 2 will also pass to the North of the Flemish Cap later on this evening, a shallow of about 102 metres in the otherwise 3,500 metre deep ocean floor.

SUNRISE AND SUNSET

Sunrise: 4.54am / Sunset: 7.21pm

NAUTICAL FACT OF THE DAY

BULBOUS BOW

A bulbous bow is a feature of many modern ship hulls. It is characterised by a protruding bulb at the bow (or front) of the ship below the waterline. Due to this, a bulbous bow is usually only visible when a ship is in drydock. The presence of this bulb modifies how water flows around the hull, thereby reducing drag and affording an increase in speed, range, and fuel efficiency. In ships that have had bulbous bows fitted, gains in fuel efficiency of between 12-15% are standard. As these factors are particularly important for almost all applications of maritime vessels, bulbous bows have seen widespread adoption since their development.

CUNARD INSIGHTS LECTURE ENRICHMENT PROGRAMME

THESE LECTURES WILL BE REPEATED ON TV CH. 30 BEGINNING AT 5.00PM TODAY.

At 10.00am in Illuminations, Deck 3 Forward ?

'Can You Hear Me Now? - The First Transatlantic Cable'

The construction and testing of the first transatlantic cable. Dan Menelly examines the history and significance of this technological milestone

Presented by Marine Biologist, Dan Menelly.

At 11.15am in Illuminations, Deck 3 Forward ?

'The Hubble Space Telescope: Window to a New Universe'

Astronaut Dr. Jeffrey Hoffman, who made three spacewalks during Hubble's initial rescue and repair mission, shares his experiences, with a retrospective of images of Hubble's greatest discoveries and an explanation of how these have changed our concepts of the universe.

Presented by Celebrity Guest Speaker - Astronaut and Scientist, Dr Jeffrey Hoffman.

At 3.30pm in Illuminations, Deck 3 Forward ?

'History of Navigation'

QUEEN MARY 2's Navigator, James Griffiths presents an insightful history of navigation through the ages

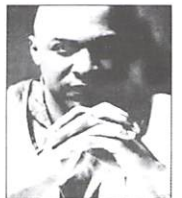
Presented by Navigator, James Griffiths

JULLIARD EVENING JAZZ CONCERT

At 10.15pm in Illuminations, Deck 3

Join Ron Blake, saxophonist, accompanied by the Mark Hodgson Trio, for an eclectic evening of jazz.

Julliard Jazz CDs, books and copies of the American Masters DVD will be available to purchase from our on board boutiques.



MARTINI MIXOLOGY

At 3.00pm in the Commodore Club, Deck 9

Learn the secrets of Martini making from our expert mixologists and enjoy a glimpse into the exclusive world of Molecular Mixology! Please register in advance by telephoning the Commodore Club on Ext. 29000 or by contacting any Bar Server.

A nominal charge of \$25.00 plus 15% service per person will apply.

SHOWTIME IN THE ROYAL COURT THEATRE

AT 7.00PM & 8.45PM

(THE 7.00PM SHOW IS A PRE DINNER SHOW FOR SECOND SITTING FOR GUESTS)

THE ROYAL ACADEMY OF DRAMATIC ART PRESENTS:

HAMLET

Learning of his father, the king's, death, Hamlet comes home to find his uncle married to his mother and installed on the Danish throne. At night the ghost of the old king demands that Hamlet avenge his 'foul and most unnatural murder', setting in motion a chain of events that will only end in tragedy.

Arguably the most famous play in the English language, presented here by a company of six in a specially adapted version. Approximate running time: 65 minutes.

Environmental Compliance HOTLINE 1 (888) 290-5105 (North America) | www.carnivalcompliance.com





SHIPBOARD INFORMATION

FILM CREW ON BOARD

There is a film crew accompanying us on this trip who will document the voyage on the **QUEEN MARY 2**. The movie will be used exclusively for the shipping company Cunard. We would like to inform you that it is possible that you will be filmed. Should you not wish to appear in this film, please give us or the film team notice beforehand. We would appreciate your assistance with this film. So, if you would like to take part in the movie and even play a little role, please do not hesitate to approach our on-board staff or the film crew. Kindly excuse any possible inconvenience. We wish you a pleasant stay with us on board.

CUNARD WHITE STAR LUGGAGE SERVICE

You are able to make arrangements to have "White Star Luggage Service" to transport your luggage home directly from **QUEEN MARY 2**. This service is provided through FedEx. To register and apply for this service, provided for guests disembarking in New York, please speak with our White Star Luggage representative who is available at the desk located on deck 2, Stairway B, Starboard Side from 10.30am - 12.00pm on 17 August 2011, or alternatively one of the Receptionists available at the Purser's Desk on Deck 2. All FedEx arrangements need to be made by noon today on Thursday, 18 August 2011.

STORAGE OF LUGGAGE IN NEW YORK

Guests who wish to store luggage after disembarking **QUEEN MARY 2** in New York prior to their return voyage in the future may do so with Luggage Concierge in New York. Please register at the Purser's Office. The cost of this service is \$65.00 per bag for up to 30 days and an additional \$30.00 per bag for the next 30 days. This will be charged to your on-board account. Bags must be collected in the Terminal ashore from the baggage hall and dropped off with the Luggage Concierge Representative after exiting Customs. Please note that New York requires 48 hour notice, therefore the deadline for the above service expires at 6.00pm on 20 August 2011.

SPECIAL SCREENING: JULLIARD

A Julliard documentary, filmed as part of the "American Masters" series will be shown on TV Ch. 29 from noon to 5.00pm and 7.00pm onwards. Julliard will have CDs of their latest recordings for sale in the Mayfair Shops on Deck 3 entitled "Goin' Up". All proceeds from the sale of this recording will benefit Julliard Jazz and the young artists studying Jazz at Julliard. A book is available in the **QUEEN MARY 2** Book shop entitled "Julliard" for \$49.95, this is a very informative book by Maro Chermayeff and Amy Schewel.

FOREIGN EXCHANGE INFORMATION

Please be advised that Foreign Currency Exchange is available at the Purser's Desk of Deck 2, Grand Lobby.

	Buy*	Sell*
EUR	0.76	0.64
GBP	0.67	0.57
AUD	1.06	0.89
CAD	1.09	0.91

* Rates are approximate. **QUEEN MARY 2** trades in USD



HOTEL MANAGER: ROBERT HOWIE

Robert was born in St Andrews, Scotland, near where he still lives today. He studied in historical Edinburgh, graduating with a degree in Hotel Management and began his career in hotels and restaurants throughout Edinburgh, before heading to Florida in 1986 to broaden his experience. Four years later the travel bug bit and took him to Princess Cruises. Rising through the ranks, Robert was appointed to the Princess new-build team and brought five ships from the shipyard and through their inaugural seasons. In 1998 he took a position as Beverage Operations Controller in the Corporate Office of the Princess fleet before being promoted to Manager, Beverage Operations based in Los Angeles. In 2003 Robert took up a posting in Nagasaki, Japan with the responsibility of overseeing the construction of the galleys, dining rooms and bars on the **Diamond and Sapphire Princess**. In addition, he advised the shipbuilding division of Mitsubishi Heavy Industries on the construction requirements of the United States Public Health Vessel Sanitation Programme. On completion of **Sapphire Princess**, Robert had the rare opportunity to take his project from the drawing board and into service, fulfilling a career goal for him. Since October 2004, Robert has been proud to be part of Cunard Line working on **QUEEN MARY 2** as both Food and Beverage Manager and Hotel Manager during some of her most iconic voyages. He has had key roles in the build-up to the launch of **QUEEN VICTORIA** in December 2007, bringing her successfully into service and through her Maiden World Voyage, as well as project managing all aspects of the hotel department for the latest addition to the Cunard fleet, **QUEEN ELIZABETH**, recommending operational improvements and developing new concepts with the Cunard Product Team in Southampton before bringing her successfully into service. **QUEEN ELIZABETH** was the tenth new ship that Robert has been involved with, and he is proud to have taken all three Cunard ships around the world on their Maiden World Voyages. Robert returned to **QUEEN MARY 2** in July 2011. When not at sea, he returns to the peace and quiet of his home near St. Andrews, continually renovating his 177 year old cottage in a village where there are less inhabitants than the total amount of crew on board **QUEEN MARY 2**.

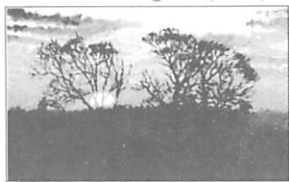
ART UNVEILING

On Friday, August 19, 2011 at 3.00 pm, Clarendon Fine Art will be having their grand unveiling of Hotel Manager, Robert Howie's Formal Portrait which was painted earlier this year on board **QUEEN ELIZABETH** by Sherree Valentine Daines - Britain's leading modern Impressionist. The unveiling will coincide with - 'The History of Impressionism, introducing Sherree Valentine Daines' art lecture.

ART TALK: THE LIFE & WORKS OF ROLF HARRIS CBE

At 11.00am in the Clarendon Fine Art Gallery, Deck 3L (Starboard)

Join us in the gallery as your art consultant presents to you the life of Britain's most popular and best-loved artist, Rolf Harris. This monumental talk and exhibition has been created to celebrate his unique contribution to fine art for over half a century. His artwork encapsulates his inspirational ability and whatever the subject or style, every piece is linked by that immediacy, accessibility and personal impact. From powerful scenes of the Australian Outback to intimate figurative studies, Rolf's art reflects the range of experiences & locations he has encountered over his long life as an artist.



TODAY'S PLANETARIUM FILM:

PASSPORT TO THE UNIVERSE - NARRATED BY TOM HANKS

At 1.00pm, 1.30pm and 2.00pm

Every day, as new scientific discoveries reveal answers to cosmic mysteries, we wonder how we fit into this vast Universe. Taking audiences on an unforgettable voyage of billions of light years, *Passport to the Universe* is an incredible journey from our home planet and the Milky Way galaxy to the edge of the Universe. Fly beneath the rings of Saturn, into the heart of the Orion Nebula, to the edge of the observable Universe and back to Earth through a black hole, experiencing these and other stunning cosmic destinations as never before possible. Tickets available from ConneXions, Deck 2 Fwd, from 9.00am until allocation exhausted.



GROOVY CHOIR

At 1.30pm in the Grand Lobby, Deck 2

Contemporary repertoire from the Bee Gees to Bacharach, with live acoustic musicians under the direction of Mark Hodgson. Come along and sing your heart out as everyone is welcome! Don't miss out!!



TODAY'S ACTIVITIES

THURSDAY, 18 AUGUST 2011

MORNING ACTIVITIES

- 6.00am "Wake up with Paul" (repeated continuously until noon). TV Ch. 29
TV Show with your Entertainment Director, Paul O'Loughlin.
- 8.00am Canyon Ranch Fitness Meet at SpaClub Desk, Deck 7
Walkathon - One Mile Around the Deck. Previous sign up required at the Canyon Ranch SpaClub Desk, Deck 7.
- 8.30am Catholic Mass With Father Lawson..... Illuminations, Deck 3
- 9.00am Crossword Puzzle & Brainteaser Available Library, Deck 8
Canyon Ranch Fitness ... Knightsbridge Room, Deck 1, Stairway C
Stretch It Out - Full Body Stretch. Previous sign up required.
First Steps Workshop: Connexions Room 6
Introduction to Microsoft Windows. Seating is limited
Golf Simulator Demo & Booking Session Fairways, Deck 12
With your sports directors, Shannon and David.
- 9.15am Beginners Bridge Class Atlantic Room, Deck 11
With instructor, Jerry Drennan.
- 10.00am Watercolour Art Class Chelsea Room, Deck 1, Stairway B
With instructor, Patricia Coulter; \$35 one-time fee for supplies. 25 guest max.
Canyon Ranch Fitness ... Knightsbridge Room, Deck 1, Stairway C
Body Blitz - Head to toe cardio workout. Fitness pass required
Cunard Insights Lecture Illuminations, Deck 3
'Can You Hear Me Now? - The First Transatlantic Cable'
Presented by Marine Biologist, Dan Menelly.
- 10.15am Diamond talk with our on board jeweller Chart Room, Deck 3
- 10.30am Intermediate Bridge Class Atlantic Room, Deck 11
With instructor, Jerry Drennan.
Next Steps Workshop: Connexions Room 6
Apple's iMovie - turn your video clips into a movie (\$30 fee)
Table Tennis Tournament Pavilion Pool Area, Deck 12
Solo Travellers Get-Together Chef's Galley, Deck 7 Starboard
Musical Trivia Golden Lion Pub, Deck 2
With the Entertainment Staff.
- 11.00am Canyon Ranch Lecture..... Connexions Room 4 & 5
'Holistic Skin Care'
With Tamara Meyer, Skin Care Therapist.
Canyon Ranch Fitness ... Knightsbridge Room, Deck 1, Stairway C
Pilates - Basic mat moves to strengthen your core. Fitness pass required.
Art Talk Gallery, Deck 3L Aft Starboard
The life & works of Rolf Harris CBE
Pearls Seminar with Wayne Revely Chart Room, Deck 3
- 11.15am Cunard Insights Lecture Illuminations, Deck 3
'The Hubble Space Telescope: Window to a New Universe'
Presented by Guest Speaker - Astronaut and Scientist, Dr Jeffrey Hoffman
Latin Line Dancing Queens Room, Deck 3
With your social hostess, Marianne
- 11.30am Morning Trivia Golden Lion Pub, Deck 2
With the Entertainment Staff.
Crazy Golf Chipping Swimming Pool, Deck 13

- 12.30pm Ballroom Dance Class - Slow Foxtrot Queens Room, Deck 3
With our on-board Dance Couple, Anthony and Kristina
Poolside Music Terrace Pool, Deck 8 Aft
With International Band, 'Vibz'. (Inclement weather venue: Pavilion Bar Deck 12)
- 1.00pm Planetarium Film: Passport to the Universe. Illuminations, Deck 3
Tickets available from ConneXions, Deck 2 Fwd, from 9:00am
- 1.30pm Target Golf Tournament Golf Netted Area, Deck 13
Planetarium Film: Passport to the Universe. Illuminations, Deck 3
Tickets available from ConneXions, Deck 2 Fwd, from 9:00am
Groovy Choir Grand Lobby, Deck 3
With the Mark Hodgson Trio
- 2.00pm Watercolour Art Class Chelsea Room, Deck 1, Stairway B
With instructor, Patricia Coulter; \$35 one-time fee for supplies. 25 guest max.
Duplicate Bridge Session Atlantic Room, Deck 11
Canyon Ranch Fitness ... Knightsbridge Room, Deck 1, Stairway C
Muscle max - Head to toe resistance workout. Previous sign up required.
Canyon Ranch Lecture..... Connexions Room 4 & 5
'Peak Calorie Burning'
With Jennifer McAlear, Fitness Specialist
Planetarium Film: Passport to the Universe. Illuminations, Deck 3
Tickets available from ConneXions, Deck 2 Fwd, from 9:00am
Snowball Jackpot Bingo Queens Room, Deck 3
- 2.30pm Needlework & Knitting Champagne Bar, Deck 3
Join Social Hostess, Marianne, for an informal get-together with your own projects. Please note: this is not a class.
iStudy: First Steps Workshop Connexions Room 6
Introduction to Apple's iTunes. Seating is limited.
- 3.00pm Hooplah Tournament Pavilion Pool Area, Deck 12
Wipeout Trivia Golden Lion Pub, Deck 2
With the Entertainment Staff.
Canyon Ranch Fitness ... Knightsbridge Room, Deck 1, Stairway C
Areobitone - Combination of cardio and resistance. Fitness pass required
Dice Gaming lessons Empire Casino, Deck 2
Join us to learn how to play one of the most exciting games in a casino.
- 3.30pm Cunard Insights Lecture Illuminations, Deck 3
'The History of Navigation'
Presented by Navigator, James Griffiths
Complimentary Golf Competition The Fairways, Deck 12
160.5 yards closest to the pin! Places are limited.
Afternoon Tea Dance Queens Room, Deck 3
Featuring the Royal Court Theatre Orchestra.
- 4.00pm Friends of Bill W. Boardroom, Deck 9
Canyon Ranch Fitness ... Knightsbridge Room, Deck 1, Stairway C
Indoor Spinning - High intensity bike workout - Fitness Pass required.
- 4.30pm Pub Team Trivia Golden Lion Pub, Deck 2
With the Entertainment Staff.
- 4.45pm iStudy: Seminar - Starting with eBay Connexions Rooms 4 & 5
- 5.00pm "Live @ 5.00" (Until 7.00pm) TV Ch. 29
The world's premier radio show at sea! LIVE with DJ Darren
Call 23015 for requests
Friends of Dorothy GLBT. Commodore Club, Port Side, Deck 9
Movie Screening: 'The Beaver' Illuminations, Deck 3
This film is an emotional story about a man on a journey to re-discover his family and restart his life. Plagued by his own demons, Walter Black was once a successful toy executive and family man, but now suffers from depression. No matter what he tries, Walter can't seem to get himself back on track... until a beaver hand puppet enters his life.
Starring Mel Gibson, Jodie Foster, Anton Yelchin. Directed by Jodie Foster
Rated PG-13. 91 minutes. 2011

AFTERNOON ACTIVITIES

- Noon Eight bells to mark the exact time of midday . Grand Lobby, Deck 3
Report from the Bridge Public Address
Bingo Ticket Sale Outside the Queens Room (port side) Deck 3
Until 2.00pm.
- 12.15pm Lunchtime Melodies Chart Room, Deck 3
With pianist Derek Conlon
Lunchtime Melodies Golden Lion Pub, Deck 2
With Campbell Simpson.



TONIGHT'S ENTERTAINMENT

TONIGHT'S DRESS CODE: SEMI FORMAL. GENTLEMEN: SUIT OR SPORTS JACKET WITH A TIE. LADIES: COCKTAIL DRESS OR TROUSER SUIT.

GOLDEN LION PUB

Deck 2 midships

From 5.15pm to 6.00pm

CAMPBELL SIMON

performs your favourites

From 7.30pm to 8.30pm, 9.30pm to 10.00pm and 11.15pm to midnight

DEREK CONLON

entertains at the piano

At 10.00pm

SPELLINGBEE

With the Entertainment Staff!

G32

Deck 3 aft

From 9.30pm to 10.30pm & 11.30pm to 12.30am

INTERNATIONAL BAND 'VIBZ'

keep the dance floor hot!

From 10.30pm to late party the night away with

DJ DARREN!

11.30PM TO MIDNIGHT
ROCK ' ROLL NIGHT

Guests under the age of 18 are not permitted in G32.

THE COMMODORE CLUB

Deck 9 forward

From 7.30pm to 8.30pm and 10.00pm to midnight

SIMON GALFE

performs your favourite

QUEENS ROOM

Deck 3 Aft

From 7.45pm to 8.30pm and 9.45pm to midnight

BALLROOM & LATIN DANCING

with the

QUEENS ROOM ORCHESTRA

under the musical direction of
TERRY QUINN

featuring vocalist
JOHN LABELLE

From 8.30pm to 9.45pm and midnight to 12.30am

STRICT TEMPO MUSIC

Pre-recorded music for you dancing and listening pleasure

CHART ROOM

Deck 3 midships

From 5.15pm to 6.00pm, and 6.30pm to 7.15pm

Cocktail jazz featuring the

MARK HODGSON TRIO

7.30pm to 8.30pm

Celebrate the cocktail hour with pianist

CAMPBELL SIMPSON

From 9.30pm to 10.30pm, 10.45pm to 11.30pm and 11.45pm to 12.30am

Enjoy the sounds of harpist

REBECCA MILLS

ILLUMINATIONS

Deck 3 forward

At 5.00pm and 8.00pm

MOVIE SCREENING:

'THE BEAVER'

This film is an emotional story about a man on a journey to re-discover his family and restart his life. Plagued by his own demons, Walter Black was once a successful toy executive and family man who now suffers from depression. No matter what he tries, Walter can't seem to get himself back on track...



until a beaver hand puppet enters his life
Mel Gibson, Jodie Foster, Anton Yelchin
Directed by Jodie Foster. Rated PG-13; 91 minutes; 2011

At 10.15pm

EVENING JAZZ CONCERT

Featuring Juilliard Jazz faculty,

RON BLAKE, SAXOPHONE



accompanied by the

MARK HODGSON TRIO

Juilliard Jazz CD's, book, and copies of the American Masters DVD are available to purchase from our on board boutiques.

SHOWTIME IN THE ROYAL COURT THEATRE

AT 7.00PM & 8.45PM

(THE 7.00PM SHOW IS A PRE DINNER SHOW FOR SECOND SITTING FOR GUESTS)

THE ROYAL ACADEMY OF DRAMATIC ART PRESENTS:

HAMLET

Learning of his father, the king's, death, Hamlet comes home to find his uncle married to his mother and installed on the Danish throne. At night the ghost of the old king demands that Hamlet avenge his 'foul and most unnatural murder', setting in motion a chain of events that will only end in tragedy.

Arguably the most famous play in the English language, presented here by a company of six in a specially adapted version. Approximate running time: 65 minutes.

Please do not reserve seats prior to Show time. Audio, video recording and flash photography is prohibited. Please also note that theatre haze and strobe lighting may be used. Once capacity of the Royal Court Theatre has been reached the doors will be shut as a requirement of health and safety





TREAT YOURSELF TO...

CANYON RANCH SPA

Decks 7 and 8 forward

CANYON RANCH MASSAGE

50 minutes \$99 at 8:00am, 9:00am
6:00pm and 7:00pm. Usually \$138.

BLACK OLIVE & COFFEE BODY

FIRMING SCRUB

50 minutes \$99. Usually \$149.

HAIR MASQUE

Receive a complimentary hair masque
with any shampoo and blow dry or cut and style.
Valued at \$38!

TOUR & TRAVEL OFFICE

Deck 2 Grand Lobby

CHAUFFEUR CAR SERVICE

Continue your journey in style with a private
car arranged by Cunard. Choose from a
sedan, limousine or passenger van to transfer
you from the pier direct to your destination.
All final bookings or cancellations for New
York motorcoach and private transfers
must be made by 5.00pm today. Tickets
are non-refundable after this deadline

THE EMPIRE CASINO

Deck 2 Grand Lobby

At 2.00pm

SNOWBALL JACKPOT BINGO IN THE QUEENS ROOM

Bingo tickets are on sale from noon to 2.00pm
outside the Queens Room (Deck 3, Aft)
Have fun and Good Luck!

At 3.00pm

COMPLIMENTARY GAMING LESSONS

Learn how to play Dice (Craps)

10.00pm to 11.00pm

FUN PAIRS BLACKJACK TOURNAMENT

Qualifying rounds. Play seven hands of Blackjack
and you can be our next Blackjack champion!
If you play twice, third try is for free!

Win up to \$1000 from our Instant
Scratch Cards! Instant scratch cards and
genuine used casino playing cards
For sale only \$1 at deck at the Cashiers Desk

CLARENDON FINE ART

The Gallery Deck 3

EXHIBITION: ROLF HARRIS CBE – A STUDIO COLLECTION

This monumental exhibition has been created to
celebrate his unique contribution to fine art for
over half a century. It includes an exceptional
array of collectable editions, lithographs &
sculptures all of which demonstrate the versatility,
technical skill and creative energy of Britain's
most enduringly popular and best loved artist

VOYAGE SALES SPECIALISTS

Deck 2 B stairway

CUNARD IS DELIGHTED TO ANNOUNCE THE 2013 WORLD VOYAGES

Between January and April 2013 both
QUEEN MARY 2 and QUEEN VICTORIA
trace their epic world sailings on two
distinct itineraries. Discovering an array
of exciting and extraordinary destinations
that inspire the imagination. New York
roundtrip 33 nights to the Venice!

QUEEN MARY 2 HIGHLIGHTS

Overnight stays in Hong Kong, Dubai,
Shanghai and a two-night stay in Cape Town
6 Maiden calls including Abu Dhabi,
UAE, Langkawi, Malaysia, and
Port Elizabeth, South Africa

QUEEN VICTORIA HIGHLIGHTS

Overnight stays in Hong Kong,
Dubai, Shanghai and Sydney
9 Maiden calls including Falmouth,
Jamaica, Brisbane, New Zealand, Bali,
Indonesia and Manila, Philippines
Combine either with Transatlantic Crossings to
create voyage options in and out of New York

For more details or appointments,
please contact Eli & Yoyo
at extension 22347 & 22339

BARTENDERS' RECOMMENDATIONS

Available at all bars and restaurants

MAI TAI

A legendary Tiki drink using a combination of Light
& Dark Rums, Amaretto, Apricot brandy, Orange
Curacao, Lime and Pineapple Juice. Built over ice
and garnished with a Pineapple wedge & Cherry

BLUSHING DUCHESS

A refreshing long drink made with Grey Goose
Vodka, muddled Grapefruit wedges and a
dash of Orange Curacao. Simply delicious!

BOOKSHOP & LIBRARY

Deck 8 forward

GIFTS FOR CHILDREN & YOUNG READERS.

Happy children lead to happy parents all having
a great holiday. We sell literature and prose
for children of all ages on a variety of subjects
as well as a large selection of activity packs
jigsaws, sticker books and puzzle books.

MAYFAIR SHOPS

Deck 3 Grand Lobby

WATCH WONDERLAND

This is one watch promotion not to be missed! We
have a wide range of watches on the shelves for
you to choose from today. We have watch boxes
for \$19.99, sports, cuff, ladies and men's watches
for \$20. We also have our classic, fun and sex-
designer watches with Guess, Fossil, DKNY, Citizen
and Rotary. These are all at great tax and duty free
prices. Do not miss this one day only promotion!

GORGEOUS GIFTWARE

Another superb one day only promotion that
will not be missed. Crystal frames, tile painting, Crystal
craft figurines, trinkets, jewellery boxes, pens,
pens, mini clocks, all at amazing 50% off retail.
Come to the shops today and treat yourself!

COUNTDOWN: BRAND NEW SUMMER SALE 2011 LAUNCH TWO DAYS TO GO!

H. STERN

BRAZILIAN FLOWERS

Like a floral spring, this collection transports you
the best colours of Brazilian gemstones

IMAGES PHOTO GALLERY

Deck 3L Portside Bridge

IF YOU SEE THE VIDEO CAMERA... WAVE!!

We will be recording all the action on
board throughout the voyage. Order
"Your Voyage" DVD today. It
includes a tour around the ship

DIGITAL PHOTOGRAPHY

For your digital photography needs,
visit the Photo Shop on Deck 3 Aft
and find a choice selection of compact
digital cameras and accessories. We
also have batteries, camera cables

THE FLOWER SHOP

Flowers are the best gift, they bring joy
to a heart and laughter to a smile!

SAY IT WITH FLOWERS!

To order, please contact the Florist
on ext. 20657 from 7.30am to
Noon & 3.00pm to 8.00pm



OPENING & SERVICE HOURS

PLEASE DO NOT HESITATE TO CONTACT YOUR MAITRE D' WITH ANY REQUESTS OR ENQUIRIES.

TONIGHT'S DRESS CODE: SEMI FORMAL. GENTLEMEN: SUIT OR SPORTS JACKET WITH A TIE. LADIES: COCKTAIL DRESS OR TROUSER SUIT.
Public Health Notice: Public Health Services have determined that eating uncooked or partially cooked meat, poultry, fish, seafood or eggs may present a health risk to the consumer.

RESTAURANT HOURS

THE GRILLS AND BRITANNIA CLUB

(D Starway)

Senior Maitre d'Hotel - Benjamin Acier

Breakfast: 8.00am to 9.30am
Lunch: 12.30pm to 2.00pm
Dinner: 6.30pm to 9.00pm

BRITANNIA RESTAURANT

(Decks 2 & 3, C Starway)

Maitre d'Hotel - Patu Kere

Breakfast: 8.00am to 9.30am
Lunch: 12.30pm to 2.00pm
Main dinner: 6.00pm, last order 6.30pm
Late dinner: 8.30pm, last order 9.00pm

AFTERNOON TEA

Queens Room: 3.30pm to 4.30pm
Queens Grill Lounge: 3.30pm to 4.30pm
(Gill guests only please)

WINE ENQUIRIES

For any wine enquiries, please contact
Chief Sommelier Kelley Michael Schaefer on ext 22062.

KING'S COURT

(Deck 7, C & D Starway)

BUFFET BREAKFAST

Continental: 4.00am to 6.30am
Full Breakfast: 6.30am to 11.30am

BUFFET LUNCH/ AFTERNOON SNACK

11.30am to 5.30pm

BUFFET DINNER: LA PIAZZA

5.30pm to 11.00pm

LATE NIGHT SNACK

11.00pm to 4.00am

TODD ENGLISH

(Deck 8, D Starway)

Lunch: Noon to 2.00pm. A \$20.00 cover charge applies.
Dinner: 6.00pm to 9.30pm. A \$35.00 cover charge applies.
For reservations please dial 28026
between 10.00am and 4.00pm.

TONIGHT'S ALTERNATIVE DINING

KING'S COURT A LA CARTE

Dine from 7.00pm - 9.00pm in the below locations
where our waiters are happy to explain our A la
carte menus for these speciality restaurants.
A \$10.00 cover charge applies.
For reservations please dial 25056.

CHEF'S GALLEY

Our on board show demonstration galley is where
our chefs this evening will show, explain and prepare
popular Steak House dishes in front of your eyes.

**Reservations will close at noon today
to enable preparation.**

THE CARVERY

Traditional British cuisine where you can enjoy a succulent
steak or delicious seafood from our a la carte menu.

LOTUS

An Asian inspired tasting menu full of flavours from the east.
Enjoy a complimentary authentic sake with your meal.

**The dress code in the a la carte venues
does not require a jacket for gentlemen.**

BAR HOURS

CHART ROOM

(Deck 3, C Starway)

10.00am until late

COMMODORE CLUB

(Deck 9, A Starway)

10.00am until late

EMPIRE CASINO BAR

(Deck 2, C Starway)

As per casino until close

G32

(Deck 3L, D Starway)

9.30pm until the wee small hours

Guests under the age of 18 are not permitted in G32

GOLDEN LION PUB

(Deck 2, C Starway)

10.00am until late

Pub Lunch: Noon to 2.30pm

PAVILION POOL BAR

(Deck 12, B Starway)

9.00am to 7.00pm

QUEEN'S GRILL LOUNGE

(Deck 7, D Starway)

11.00am until 2.00pm
and 6.00pm until close
(Gill guests only please)

SIR SAMUEL'S

(Deck 3, C Starway)

7.00am to midnight

Light snacks served throughout the day until 5.00pm

TERRACE POOL BAR

(Deck 8, D Starway)

10.00am to 10.00pm

(Weather permitting)

VEUVE CLICQUOT CHAMPAGNE BAR

(Deck 3, B Starway)

11.00am to midnight

WINTER GARDEN

(Deck 7, B Starway)

11.00am until 9.00pm

FACILITY HOURS

VOYAGE SALES & CUNARD WORLD CLUB

(Deck 2, B starway)

10.00am to noon and 3.00pm to 5.00pm

CANYON RANCH SPA CLUB

(Deck 7, A starway)

8.00am to 8.00pm

CANYON RANCH GYMNASIUM

(Deck 7, A starway)

6.00am to 8.00pm

CANYON RANCH SALON

(Deck 8, A starway)

9.00am to 8.00pm

MEDICAL CENTRE

(Deck 1, Portside, B starway)

9.00am to 11.00am and 4.30pm to 6.30pm
For medical emergencies, please dial 911 999

CLARENDON FINE ART

(Deck 3L Starboard, C starway)

Gallery: Open 24 hours

THE ZONE & THE PLAY ZONE

(Deck 6 Portside, Aft)

9.00am to noon, 2.00pm to 5.00pm
and 8.00pm to midnight

IMAGES PHOTO GALLERY

(Deck 3L Portside, D starway)

9.00am to 10.00pm

IMAGES PHOTO SHOP

(Deck 3, C starway)

9.00am to 10.00pm

MAYFAIR SHOPS

(Deck 3, Grand Lobby)

9.00am to 9.00pm

BOOKSHOP & LIBRARY

(Deck 8, A starway)

9.00am to 6.00pm

EMPIRE CASINO

(Deck 2, Grand Lobby)

24 hour Slots / Cashier: 10.00am / Tables: 11.00am

TOUR & TRAVEL OFFICE

(Deck 2, Grand Lobby)

9.00am to noon and 3.00pm to 5.00pm

INTERNET CENTRE

(Deck 2, Between A & B starways)

Open 24 hours

INTERNET MANAGER'S HOURS

(Deck 3, Grand Lobby, 1 Deck 2)

9.00am to noon, 2.00pm to 5.00pm
& 8.00pm to 10.00pm