

DAILY PROGRAMME

THE MOST FAMOUS OCEAN LINERS IN THE WORLDSM

MONDAY, 15 AUGUST 2011

IN THE PORT OF SOUTHAMPTON

TONIGHT'S DRESS CODE: ELEGANT CASUAL

Ladies: Dress, skirt or trousers. No jeans or shorts.

Gentlemen: A jacket, no tie required.



RMS QUEEN MARY 2

WESTBOUND TRANSATLANTIC CROSSING

VOYAGE NUMBER QM119

Deputy Captain: Robert Camby Chief Engineer: Brian Wattling Master: Commodore Christopher Rynd Hotel Manager: Robert Howie Entertainment Director: Paul O'Loughlin

SENIOR OFFICERS SAILING

MASTER

COMMODORE CHRISTOPHER RYND

DECK DEPARTMENT

Deputy Captain Robert Camby
Safety Officer Nigel Smyth
Environmental Officer John Smith
Security Officer Peter Stevens

MEDICAL DEPARTMENT

Principal Medical Officer Dr. Tanja Watson
Medical Officer Dr. Robert Stevens

TECHNICAL DEPARTMENT

Chief Engineer Brian Wattling
Staff Chief Engineer Colin McIntosh
Ship's Services Engineer Ian Gillone
Chief Electrical Engineer Liam Daniels

HOTEL DEPARTMENT

Hotel Manager Robert Howie
Food & Beverage Manager Glenn Milway
Asst F&B Manager Claudia Pal
Executive Chef Klaus Kremer
Public Rooms Manager Philip MacKenzie
Chief Purser Chantal Mooiman
Purser Guest Services Jennie Foskett-Shepherd
Night Purser James Doran
Executive Housekeeper Colin Watson
Senior Maitre d'Hotel Beniamino Acler
Entertainment Director Paul O'Loughlin
Asst. Entertainment Director Rachael Fish
Production Manager Courtney Cook
Personnel & Training Manager Aubrey Lee
Social Hostess Marianne Corlett
Tour Manager Beatrix Bense
Voyage Sales Specialists Eli Iniesta
& Hinano Yeo

FROM THE NAVIGATOR

SUNRISE & SUNSET

Sunrise: 5.50am / Sunset: 8.30pm.

TODAY'S WEATHER IN PORT

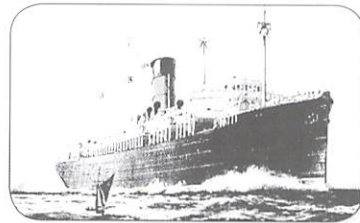
High 19°C (66°F), Low 16°C (64°F)

Mainly Sunny



WELCOME ABOARD QUEEN MARY 2 AS SHE CONTINUES HER WESTBOUND TRANSATLANTIC CROSSING!

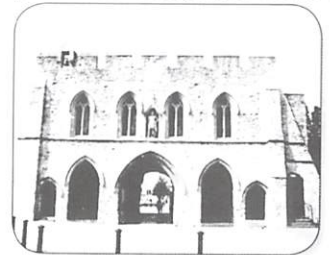
Commodore Christopher Rynd, his Officers and Crew welcome all who are joining us today on our 'Westbound Transatlantic' crossing. We wish you a pleasant journey and relaxing holiday as QUEEN MARY 2 departs for our next port of call, New York.



WELCOME TO SOUTHAMPTON!

In 1911 Cunard Line purchased three ships, renamed the Albania, Ausonia and Ascania, to begin a new service between London, Southampton and Canada. The route was intended to take advantage of a treaty signed between the Canadian and French governments whereby goods shipped to Canada through a British port received a rebate. Cargo was loaded in Tilbury Docks, London, and passengers joined the ship in Southampton, which then proceeded to Quebec

and Montreal. This new route was pioneered by the Albania, which arrived in Southampton for the first time on the 2nd May 1911, beginning a long and important relationship between Cunard and Southampton that remains to this day. In 1965 Cunard named Southampton as its home port, and the QE2 carried its name on her stern for thirty nine years and nearly six million miles. Today, Cunard's headquarters remain in Southampton - now in the modern surroundings of Carnival House, and the three Cunard Queens, the youngest fleet in the world, still proudly carry the name of Southampton on their stern. Southampton is a city and major port situated on the south coast of England. It is the closest city to the New Forest, King Henry VIII's hunting ground, situated approximately halfway between Brighton and Bournemouth. Southampton lies at the northern-most point of Southampton Water where it is joined by the river Test and Itchen river, with the river Hamble joining to the south of the urban area. The city represents the core of the Greater Southampton region. A resident of Southampton is called a Sotonian. Southampton has always been strongly connected with maritime history and developments. In particular, it is a primary port for cruise ships, its heyday being the first half of the 20th Century, and in particular the inter-war years, when it handled almost half the passenger traffic of the UK. Today it remains home to many luxury liners, as well as being a very important container port. The outstanding harbour means it is the principal port on the south coast, and



one of the largest in the UK. Sailing is a popular sport here. Much of this is centred around the Ocean Village development, a local marina which includes one of the South Coast's major independent cinema complexes, Harbour Lights. From 1977 to 2001 the famous Whitbread Around the World Yacht Race (now known as the Volvo Ocean Race) started in Southampton. Southampton is also home to Southampton Football Club and is a host city for the 2015 Rugby World Cup with matches being played at the city's St Mary's Stadium.

SOUTHAMPTON CHAMPAGNE SAILAWAY

From 4.45pm onwards, Terrace Bar, Deck 8 Aft

Join us at the Terrace Bar on Deck 8 Aft for a glass of "QUEEN MARY 2's" official 'Veuve Clicquot' Champagne as we say Farewell to "Queen & Country". Alternatively, 20cl Lanson Brut and 20cl Lanson Rose Champagnes are also available, see your Bar server for selection and prices.

SHIPBOARD INFORMATION

⌚ TIME CHANGE

Please be reminded that early this morning the ship's time was SET BACK ONE HOUR. This will be repeated tomorrow and clocks will be SET BACK ONE HOUR early on Saturday morning. Please set your watches back again before retiring this evening Monday 15 August.

FILM CREW ONBOARD

There is a film crew accompanying us on this trip who will document the voyage on the QUEEN MARY 2. The movie will be used exclusively for the shipping company Cunard. We would like to inform you that it is possible that you will be filmed. Should you not wish to appear in this film, please give us or the film team notice beforehand. We would appreciate your assistance with this film. So, if you would like to take part in the movie and even play a little role, please do not hesitate to approach our on-board staff or the film crew. Kindly excuse any possible inconvenience. We wish you a pleasant stay with us on board.

CUNARD WHITE STAR LUGGAGE SERVICE

You are able to make arrangements to have "White Star Luggage Service" to transport your luggage home directly from QUEEN MARY 2. This service is provided through FEDEX. To register and apply for this service, please check your daily program for the White Star Luggage Representative schedule. All FEDEX arrangements need to be made by noon on Thursday, 18 August 2011.

👂 ASSISTIVE LISTENING DEVICES

For those guests who are hard of hearing, assistive listening devices (headsets and neckloops) are available from the Purser's Office, Deck 2. Please look in the Daily Programme for the symbol shown above. This will be placed next to those events which utilise the devices.

THE ZONE & THE PLAY ZONE

Registration will take place after passenger drill, until 5.30pm. This evening The Zone will be open from 6.00pm to midnight for 1- 5 years and 8.00pm to midnight for 6-17 years.

PUBLIC ANNOUNCEMENTS

Certain public address announcements may be heard in your stateroom on cabin television channel #39. The music played on that channel will be disrupted during the announcement.

FOREIGN EXCHANGE INFORMATION

Please be advised that Foreign Currency Exchange is available at the Purser's Desk of Deck 2, Grand Lobby.

	Buy*	Sell*
EUR	0.76	0.64
GBP	0.67	0.57
AUD	1.06	0.89
CAD	1.09	0.91

* Rates are approximate. QUEEN MARY 2 trades in USD.

SPECIAL NOTICE FOR EMBARKING GUESTS: EMERGENCY DRILL

At 4.00pm today, all guests who have embarked today in Southampton will be exercised in a general emergency drill. This exercise is a requirement of law and you must attend. On commencement of the exercise, broadcasts will be made and alarm bells will be sounded, calling you to your designated muster station as indicated on the notice behind your bathroom or stateroom door. Please carry your life jacket with you; do not wear it, and for safety's sake do not allow the ties to trail on the deck. The correct method of wearing a life jacket will be demonstrated to you at the end of this muster.

Please note that some guest services will be curtailed for the duration of the drill.

FOR SOCIAL EVENTS - DRESS REQUIREMENT

The dress code applies from 6.00pm every evening in the public areas and Restaurants, and will be enforced in the Britannia, Grills and Todd English Restaurants.

Formal dress:	Ladies - Evening dress or other formal attire. Gentlemen - Tuxedo, black tie or dark suit.
Semi-Formal dress:	Ladies - Cocktail dress or trouser suit. No jeans. Gentlemen - Jacket and tie.
Elegant casual dress:	Ladies - Dress, skirt or trousers. No jeans or shorts. Gentlemen - Jacket, no tie required.

For guests wishing to plan ahead, the dress code and the evening Queens Room activities until 21 August are as follows (evening activities subject to change):

15 August.....	Elegant Casual	19 August.....	Formal
16 August.....	Formal (Black & White Ball)	20 August.....	Formal (Masquerade Ball)
17 August.....	Formal (Big Band Ball)	21 August.....	Elegant Casual
18 August....	Semi Formal (Party Night with Vibz)		

*Please Note: Shorts are not permitted in the Kings Court during dinner.

CUNARD PARTNERS WITH THE JULLIARD SCHOOL

The Juilliard School established America's standard for education in the performing arts, beginning with music in 1905. In 1951, its Dance Division was established, with combined training in contemporary and ballet technique. Juilliard became part of Lincoln Center in 1968, and added a four-year drama program. A residence hall - the School's first - was completed in 1990, and in 2001, Juilliard broke new ground with the addition of its jazz programme; a graduate programme in historical performance begins in fall 2009, the same year that Juilliard inaugurates its partnership with the Metropolitan Opera's Lindemann Young Artist Development Programme. As Juilliard commences its second century of excellence, it is expanding its facilities with a 39,000 square-foot addition, due for completion in 2009. Currently more than 800 young artists from 39 states and 46 foreign countries attend Juilliard. This voyage Cunard presents the Juilliard saxophonist Ron Blake. Juilliard Jazz CD's and copies of the 'American Masters' DVD will be available to purchase from our on board boutiques.

INTRODUCING THE CUNARD SOFT DRINK PACKAGE

We are delighted to introduce the Cunard Soft Drinks Package, where a one-time payment allows you to enjoy unlimited fountain sodas for the entire voyage (in-transit guests will be required to purchase again for the next leg of the voyage). The package will only be available for purchase on the first & second day of the voyage & must be purchased for the full duration of the voyage. To enjoy this facility, take your Ship's Identity Card to any of the Cocktail Bars on board where the staff will be delighted to assist you. The package entitles the bearer of the card only, to unlimited fountain sodas served and a limited selection of juices "by the glass" in any of the Restaurants and Cocktail Bars. The price per day is \$5.95 per person with a 15% service charge. On purchasing this package, you will receive a coloured sticker attached to the back of your Identity Card. This card must then be presented to the beverage staff whenever ordering sodas. This package does not extend to bottled waters, in-cabin bar service or to any other non-alcoholic beverages.

INTERNET CENTRE - EMBARKATION SPECIAL

Purchase an Internet Time Plan and receive additional minutes FREE!

*30 min FREE with Time Plan 1

*20 min FREE with Time Plan 2

*10 min FREE with Time Plan 3

Plus fill out a raffle ticket, for your chance to win up to 500 FREE minutes in the Internet Centre located on Deck 2, Room 1, in the ConneXions Centre. Open 24 hours a day! Wireless Access is available on board.

TODAY'S ACTIVITIES

MONDAY, 15 AUGUST 2011

WELCOME ABOARD

I would like to extend a warm welcome to all guests joining us in Southampton today. I hope you will enjoy the facilities and activities on board as we sail on our westbound transatlantic crossing and our next destination is New York!

My staff and I are delighted to provide you with an array of activities, enrichment & entertainment. The Daily Programme provides you with all essential information about **QUEEN MARY 2** and is delivered to your stateroom/suite every evening for the following day.

There is also a very exciting Cunard Insights Enrichment Programme to look forward to. I am proud to be able to present the following speakers:

- Broadway and Theatre Expert, Steven Rivellino
- Astronaut and Scientist, Dr Jeffrey Hoffman
- Marine Biologist, Dan Menelly
- Royal Astronomical Society Speaker, Tom Boles

We have a number of lectures planned for each day at sea and I am sure you will find them both interesting and enriching.

In addition, we have a number of in-house staff who offer their expertise on an assortment of topics such as health and fitness with Canyon Ranch and a new iStudy programme in partnership with Apple at Cunard ConneXions.

There are many unique aspects of **QUEEN MARY 2** designed for your entertainment, one of which is our on-board theatre troupe from the Royal Academy of Dramatic Art. The actors will perform two brand new plays on this voyage, adapted especially for **QUEEN MARY 2**; *Canterbury Tales* and *Hamlet*. RADA will also stage many special events around the ship, and will be presenting workshops in the Queens Room throughout our crossing.

On most evenings we present a spectacular show in the Royal Court Theatre. We have a wonderful cast - the Royal Cunard Singers and Dancers - as well as guest/variety entertainers and artists to make every showtime special and exciting.

QUEEN MARY 2, in partnership with RealD, the world's most widely used digital 3D projection technology, is proud to bring you the first 3D Cinema projection system at sea. The RealD system will present stunning imagery in Dolby surround sound. In addition to our featured 3D showing this voyage, we will also be hosting a very special 'Night at the Opera', featuring a spectacular full production of *Carmen* by London's Royal Opera House.

There will also be a number of classical performances from our guest classical pianist, Jakob Fichert. We are delighted to welcome from the Juilliard school Ron Blake (saxophone).

Once again, welcome aboard, and enjoy the many things to do on board **QUEEN MARY 2**!

Paul O'Loughlin
Entertainment Director - **QUEEN MARY 2**

BAGGAGE DELIVERY

Your baggage will be delivered directly to your stateroom/suite. Please be aware this process takes a considerable amount of time and we ask for your patience and understanding. (Attire tonight in the restaurants is Elegant Casual). It is not unusual for bags from the same party to get split up so please do not become alarmed if only part of your baggage arrives. Please report any baggage problems to the Purser's Office.

MEDICAL SERVICES

For routine consultations with the Doctor, please see facility hours in the Daily Programme. Injections against sea sickness are available from the Medical Centre on deck 1 at any time. Tablets for sea sickness are available from the Purser's Office. Please press the speed dial button marked "emergency" on your telephone for medical emergencies only.

BOOKINGS FOR THE A LA CARTE DINING

Bookings for the à la carte dining venues are taken between 8.00am to 5.00pm daily. Due to the limited space, we apologise that we may not be able to accommodate all requests. Please note that a \$10.00 cover charge per person will apply.

RESTAURANT SEATING

Your restaurant assignment is according to the category of stateroom/suite purchased. A seating card should be placed in your stateroom/suite during embarkation. Any seating queries should be directed to the maitre d' of your assigned restaurant. Britannia guests who have any queries about their seating allocation please come to the Britannia Restaurant, deck 2, staircase C, between 2.00pm and 4.00pm.

PORT INFORMATION

Ship's agent: Home Port Operations (OCT)
C/O Carnival House, 100 Harbour Parade
Southampton, SO15 1ST
Tel: +44 (0) 2380 717906

Currency: Legal tender is the British Pound.
1.00 GBP = approx 1.62 USD or 1.14 EUR

SHUTTLE BUS SERVICE

There will be a complimentary shuttle service from **QUEEN MARY 2** to the West Quay Shopping Centre. The ride is approximately 15 minutes, and buses will depart continuously, every 30 minutes. The first bus departs the terminal at 9.00am and the last bus going back to the ship departs from the drop off point at 3.15pm. Seating is on a first come, first served basis. Please understand that there may be queues at certain peak periods of travel. It is recommended that guests on a limited time schedule make use of a taxi service.

TODAY'S ACTIVITIES

Noon	Welcome Aboard Music Grand Lobby, Deck 2 With pianist Campbell Simpson.
	Canyon Ranch SpaClub Open Deck 7 Open for tours, reservations and services, until 8.00pm.
3.15pm	Afternoon Trivia Golden Lion Pub, Deck 2 With the Entertainment Staff.
4.00pm	Passenger Emergency Drill Muster Stations, Deck 7 For all guests who embarked today in Southampton. Guests in transit need not attend this drill. Please note that the Gymnasium and Kings Court areas are closed during the drill.
4.45pm	Sailaway Party with Vibz Terrace Pool, Deck 8 Aft Join International Band, Vibz, for some upbeat sailaway tunes as we wave goodbye to Southampton! (Inclement weather venue: Pavilion Bar, Deck 12)
5.00pm	Casino Host Desk (Until 6.30pm) Empire Casino, Deck 2
5.15pm	Catholic Mass With Father Lawson. ConneXions Rooms 4 & 5, Deck 2

DEPARTURE FROM SOUTHAMPTON

4.00pm **ALL ABOARD!** All guests must be back on board
The gangway is raised and shortly afterwards **QUEEN MARY 2** sails for New York, a distance of 3155 nautical miles.
(1 nautical mile equals 1.15 statute miles, or 1.85 kilometers)



TONIGHT'S ENTERTAINMENT

TONIGHT'S DRESS CODE: ELEGANT CASUAL. GENTLEMEN: JACKET, NO TIE REQUIRED. LADIES: DRESS, SKIRT OR TROUSERS. NO JEANS OR SHORTS.

THE GOLDEN LION PUB

Deck 2 midships



From 7.30pm to 8.30pm, 8.45pm to 9.15pm,
9.30pm to 10.15pm and 11.15pm to midnight

DEREK CONLON

entertains at the piano

At 10.00pm

WELCOME ABOARD TRIVIA

With the Entertainment Staff

THE CHART ROOM

Deck 3 midships

From 6.30pm to 7.15pm and 7.30pm
to 8.15pm and 8.30pm to 9.15pm

Enjoy the soothing sounds of the

ADAGIO STRING QUARTET

From 9.30pm to 12.30am

The Jazz Club featuring the

MARK HODGSON TRIO

Sit back, chat, relax. That's where it's at!

THE GRAND LOBBY

Deck 2 midships

From 7.00pm to 7.45pm, 8.30pm to
9.15pm and 9.30pm to 10.15pm

Relax to the sounds of harpist

REBECCA MILLS

THE QUEENS ROOM

Deck 3 aft



From 7.45pm to 8.30pm and
9.30pm to 11.30pm

BALLROOM & LATIN DANCING

with the

QUEENS ROOM ORCHESTRA

under the musical direction of

TERRY QUINN

featuring vocalist

JOHN LABELLE

From 8.30pm to 9.45pm and
midnight to 12.30am

STRICT TEMPO MUSIC

Pre-recorded music for you dancing
and listening pleasure

G32

Deck 3 aft

From 10.30pm to late

Dance the night away to dancefloor hits with

DJ DARREN'S

WELCOME ABOARD DISCO

9.30pm to 10.30pm and
11.30pm to 12.30am

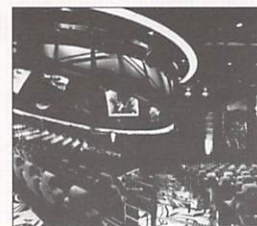
INTERNATIONAL BAND, VIBZ

keep you dancing all night long

No guests under the age of 18 are permitted in G32

ILLUMINATIONS

Deck 3 forward



At 8.00pm and 10.30pm

MOVIE SCREENING: 'THE KING'S SPEECH'

The story of King George VI of
Britain, his impromptu ascension
to the throne and the speech
therapist who helped the unsure
monarch become worthy of it.

Starring: Colin Firth, Geoffrey
Rush and Helena Bonham Carter.

Directed by Tom Hooper. Rated
PG-13; 118 minutes; 2010



COMMODORE CLUB

Deck 9 forward

From 7.30pm to 8.30pm &
10.00pm to midnight

SIMON GALFE

performs your favourites

ROYAL COURT THEATRE SHOWTIME

Decks 2 & 3

AT 7.00PM AND 8.45PM

THE 7.00PM SHOW IS A PRE-DINNER PERFORMANCE FOR GUESTS ON SECOND SITTING.

WELCOME ABOARD PRESENTATION:

INTRODUCING MEMBERS OF THE ENTERTAINMENT DEPARTMENT & FEATURING THE ROYAL CUNARD
SINGERS & DANCERS, PRESENTED BY YOUR ENTERTAINMENT DIRECTOR PAUL O'LOUGHLIN.

WITH THE ROYAL COURT THEATRE ORCHESTRA DIRECTED BY JOSEPH MIX.

Please do not reserve seats prior to Show time. Audio, video recording and flash photography is prohibited. Please also note that theatre haze and strobe lighting may be used. Once capacity of the Royal Court Theatre has been reached the doors will be shut as a requirement of health and safety.



TREAT YOURSELF TO...

CANYON RANCH SPA

Deck 7 & 8, Forward

EXPERIENCE THE POWER OF SERENITY

Discover the one-of-a-kind confluence of two legends: Canyon Ranch SpaClub on QUEEN MARY 2. Experience the profound pleasures of Canyon Ranch in a spectacular setting, enhance your voyage with a passport to our inspiring health and fitness oasis on Decks 7 and 8, and with services, presentations, and exercise classes that increase resilience, restore serenity and feel fantastic. Enjoy!

WIN

Answer the following question for your chance to win a complimentary day in our Aquatherapy Centre.

"In what year did Canyon Ranch in Tucson launch its program for people with arthritis?"

EMBARKATION DAY PROMOTION

Canyon Ranch Massage: 50 minutes \$99, usually \$138

THE EMPIRE CASINO

Deck 2 Grand Lobby

From 5.00pm to 6.30pm

CASINO HOST DESK

Come and join our Casino hostess and receive a complimentary one-on-one Bingo ticket.

TEXAS HOLD'EM PLAYERS:

Poker Pro table is available for \$1/\$2 no limit cash game during Casino opening hours. Minimum two players, maximum ten players; \$30 min buy in.

No need to sign up in advance
Cash out any time you want!

CASH GAME DURING CASINO OPENING HOURS

Min 2 players - Max 10 players
\$20 min buy in

No need to sign up in advance
Cash out any time you want!

CLARENDON FINE ART

Deck 3L Starboard, C. stairway

WELCOME TO

CLARENDON FINE ART

Clarendon Fine Art is dedicated to the presentation of the finest British & international artists, introducing exceptional contemporary art to established and emerging collectors.

In keeping with the Cunard tradition of offering the finest things in life, Clarendon Fine Art, one of Mayfair's most distinguished galleries, welcomes you to become a part of the Cunard voyage experience.

TOUR & TRAVEL OFFICE

Deck 2 Grand Lobby

IN TRANSIT TOUR OPTION: NYC006 NEW YORK BY LAND & SEA

Enjoy the views of the fantastic Manhattan skyline from the Hudson River. On land, drive through lower Manhattan by coach and pass by Ground Zero on the way. At South Street Seaport board the Zephyr, a custom-built, luxury catamaran for a 60-minute cruise of New York's waterways.



VOYAGE SALES SPECIALISTS

Deck 2 midships

YOYO & ELI

Your Voyage Sales Specialists and
Cunard World Club Representatives

Welcome you aboard

QUEEN MARY 2, Your home away from home!

Find out more about your Cunard World Club benefits or to discover the great advantages of booking your future voyages on board

For more details or appointments, please contact
Yoyo and Eli at extension 22339 & 22347

THE FLOWER SHOP

Flowers are the best gift, they bring joy
to a heart and laughter to a soul!

SAY IT WITH FLOWERS!

To order, please contact the Florist on ext. 20657
from 7.30am to Noon & 3.00pm to 8.00pm.

BARTENDERS' RECOMMENDATIONS

Available at all bars and restaurants

CITRUS COOLER

A Cool & refreshing Cocktail with Grey
Goose Citron, Elderflower Essence, Apple
juice, Lime and finished with a touch of
Cunards very own Sauvignon Blanc.

TROPICAL ITCH

Absolut Vodka combined with Spiced Rum,
Mango Puree and a dash of Maraschino
Liqueur. Shaken and served straight up!

BOOKSHOP & LIBRARY

Deck 8 Forward

WELCOME ABOARD

Monika and Len invite all our newly joined guests to visit the largest Library on-board ship or ocean liner. With over 10,000 books to choose from, you won't be short of something to read. Find us on deck 8, forward at the A stairwell adjacent to our fabulous Bookshop, specialising in all things maritime, as well as postcards, prints, pens, pencils, posters, travel guides and lots more.

MAYFAIR SHOPS

Deck 3 Grand Lobby

A WARM WELCOME

A warm welcome to all our newly embarked guests from your on board Boutiques, we hope you all enjoyed your time in Southampton and look forward to you visiting us on board.

Sample TAX FREE shopping at its
best - Priced in US dollars - exchange
rate 1.61 (approx) to £1.

AVOID THE UK VAT INCREASE

Don't forget that all purchases on board
are VAT FREE! So now there is even more
reason to shop and save on board.

H. STERN

THE ZEPHYR COLLECTION

Three inspirations of this collection makes the
pieces unforgettable:- Sailboats, women in
contact with nature and hair blown by the wind

IMAGES PHOTO GALLERY

Deck 3L portside & deck 3 b; Britannia

WELCOME ABOARD!

Today's photographs will be ready for
viewing after 6.00pm tonight! See all your
photographs that will be taken during your
voyage. Images Gallery is located on Deck 3L

PHOTO PACKAGES

The Images Photo Gallery is now offering
prepaid photo packages. Save up to 40%
on all your photographs taken on Queen
Mary 2 when you purchase a photo package.
Photo packages are valid only per voyage
segment. Images Photo Gallery Deck 3L.

OPENING & SERVICE HOURS

PLEASE DO NOT HESITATE TO CONTACT YOUR MAITRE D' WITH ANY REQUESTS OR ENQUIRIES.

TONIGHT'S DRESS CODE: ELEGANT CASUAL. GENTLEMEN: JACKET, NO TIE REQUIRED. LADIES: DRESS, SKIRT OR TROUSERS. NO JEANS OR SHORTS.

Public health notice: Public Health Services have determined that eating uncooked or partially cooked meat, poultry, fish, seafood or eggs may present a health risk to the consumer.

RESTAURANT HOURS

THE GRILLS

(D Starway)

Lunch: 1.00pm to 2.30pm
Dinner: 6.30pm to 9.00pm

BRITANNIA CLUB

(Deck 3, C Starway)

Dinner: 6.30pm to 9.00pm

BRITANNIA RESTAURANT

(Decks 2 & 3, C Starway)

Lunch: 12.30pm to 2.00pm

Main dinner: 6.00pm, last order 6.30pm

Late dinner: 8.30pm, last order 9.00pm

AFTERNOON TEA

Queens Room: 3.30pm to 4.30pm

Queens Grill Lounge: 3.30pm to 4.30pm

(Grill guests only please)

Queens Grill, Senior Maitre d'Hôtel - Beniamino Acler

Princess Grill Maitre d'Hôtel - Sasa Manojlovic

Britannia Maitre d'Hôtel - Patu Kerei

Britannia Club Maitre d'Hôtel - Jacek Koczur

TODD ENGLISH

(Deck 8, D Starway)

Dinner: 6.00pm to 9.30pm. A \$35.00
cover charge applies.

For reservations please dial 28026
between 10.00am and 4.00pm.

KING'S COURT

(Deck 7, C & D Starway)

BUFFET LUNCH/ AFTERNOON SNACK

11.30am until commencement of Embarkation Drill

BUFFET DINNER:

LA PIAZZA & THE CARVERY

From completion of Embarkation Drill to 11.00pm

LATE NIGHT SNACK

11.00pm to 4.00am

WINE ENQUIRIES

For any wine enquiries, please contact

Chief Sommelier Kelley Michael

Schaeffer on ext 22062.

BAR HOURS

GOLDEN LION PUB

(Deck 2, C Starway)

10.00am until late

Pub Lunch: Noon to 2.30pm

PAVILION POOL BAR

(Deck 12, B Starway)

Noon to 7.00pm

QUEEN'S GRILL LOUNGE

Grill guests only please

(Deck 7, D Starway)

11.00am to 2.00pm and

6.00pm until close

TONIGHT'S ALTERNATIVE DINING

KING'S COURT A LA CARTE

Dine from 7.00pm - 9.00pm in the below locations
where our waiters are happy to explain our A la
carte menus for these speciality restaurants.

A \$10.00 cover charge applies.

For reservations please dial 25056.

CHEF'S GALLEY

Our on board show demonstration galley is where
our chefs this evening will show, explain and prepare
popular Indian dishes in front of your eyes

Reservations will close at noon today
to enable preparation.

The dress code in the a la carte venues
does not require a jacket for gentlemen.

Todd English Maitre d'Hôtel - Ionel Tamasanu

King's Court Maitre d'Hôtel - Franz Zeissler

CHART ROOM

(Deck 3, C Starway)

5.00pm until late

COMMODORE CLUB

(Deck 9, A Starway)

5.00pm until late

EMPIRE CASINO BAR

(Deck 2, C Starway)

As per Casino opening hours

G32

(Deck 3L, D Starway)

9.30pm until the wee small hours

Guests under the age of 18 are not permitted in G32

photographic identification may be requested

SIR SAMUEL'S

(Deck 3, C Starway)

7.00am until midnight

Light snacks served throughout the day until 5.00pm

TERRACE POOL BAR

(Deck 8, D Starway)

10.00am until 11.00pm

(Weather permitting)

VEUVE CLICQUOT CHAMPAGNE BAR

(Deck 3, B Starway)

Noon until midnight

WINTER GARDEN

(Deck 7, B Starway)

5.00pm until 9.00pm

CUNARD WORLD CLUB DESK & VOYAGE SALES OFFICE

(Deck 2, B Starway)

Closed

CANYON RANCH SPA CLUB

(Deck 7, A Starway)

8.00am to 8.00pm

CANYON RANCH GYMNASIUM

(Deck 7, A Starway)

6.00am to 8.00pm

CANYON RANCH SALON

(Deck 8, A Starway)

9.00am to 8.00pm

BOOKSHOP & LIBRARY

(Deck 8, A Starway)

6.00pm to 9.00pm

FACILITY HOURS

CLARENDON FINE ART

(Deck 3L Starboard, C starway)

Gallery: Open 24 hours

THE ZONE & THE PLAY ZONE

(Deck 6 Portside, Aft)

Registration will take place after drill until 5.30pm

Open from 8.00pm to midnight.

MEDICAL CENTRE

(Deck 1 Portside, B starway)

8.00am to 9.00am & 4.00pm to 5.00pm

For medical emergencies only please dial 911/999.

IMAGES PHOTO GALLERY

(Deck 3L Portside, C Starway)

5.00pm to 10.00pm

IMAGES PHOTO SHOP

(Deck 3, C Starway)

5.00pm to 11.00pm

MAYFAIR SHOPS

(Deck 3, Grand Lobby)

5.30pm to 10.00pm

EMPIRE CASINO

(Deck 2, Grand Lobby)

Casino opens approx. two hours after departure.

TOUR & TRAVEL OFFICE

(Deck 2, Grand Lobby)

Closed

Pre-booked tickets will be delivered to your stateroom this evening.

INTERNET CENTRE

(Deck 2, Between A & B starway)

Open 24 hours

INTERNET MANAGER'S HOURS

(Deck 2, Between A & B Starway)

2.30pm to 5.00pm and 7.00pm to 9.00pm